

**KE MABAPI LE  
MAHLOMOLA A  
TLHEKEFETSO YA  
BONG**



**E tla tsamaiswa ka ditshiya tse nne tsa  
NSP mabapi le Tlhekefetso ya Bong  
(Tlhekefetso ya bong le dipolao tsa basadi)**

*Hobaneng re hloka bili...*



**social development**

Department:  
Social Development  
REPUBLIC OF SOUTH AFRICA



## Mahlasipa a mahlomola a tlhekefetso ya bong a ntse a kgethollwa

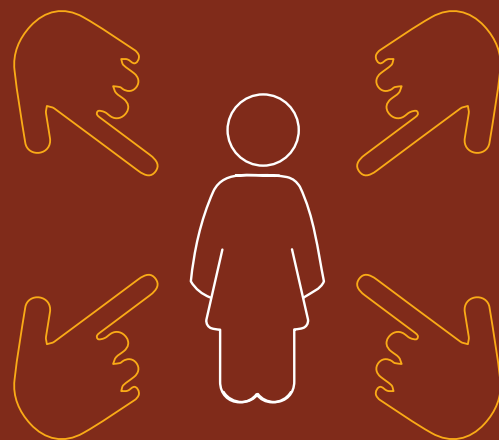
Tjhata e teng ya Mahlasipa a Tlolo ya Molao Afrika Boroa \* e beha ditokelo tsa bahlaseduws ba botlokotsebe setsing sa sistimi ya toka, ho ba fa ditokelo tse tshwanang le tsa batho ba qoswang kapa ba tshwerweng.

- **Mahlasipa a mahlomola a tlhekefetso ya bong a ntse a kgethollwa** nakong le kamora tshebetso ya molao; Kgethollo ena e ka ba thibela ho ba le ditokelo tse lekanang tsa phihlello ya toka le tshehetso.

- Ha sena se etsahala, se bitswa **TLHEKEFETSO YA BOBEDI.**

**Bona tse ding ka tlhekefetso ya bobedi....**

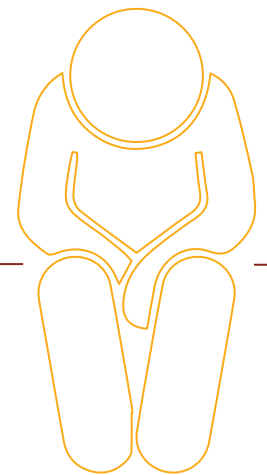
\*Bona kaga bohlasipa ba now into mo Africa borwa:<https://www.justice.gov.vc/docs/vc/vceng.pdf>



## KAMOO SEKGONO SA TLHEKEFETSO YA BONG E E TSAHALANG

Tlhaselo ya bobedi e etsahala kamora hore motho e be phofu ya tlhekefetso ya bong. Mohlala, ho ka etsahala nakong ya tshebetso ya ho tlaleha botlokotsebe, haeba lehlatsipa ke:

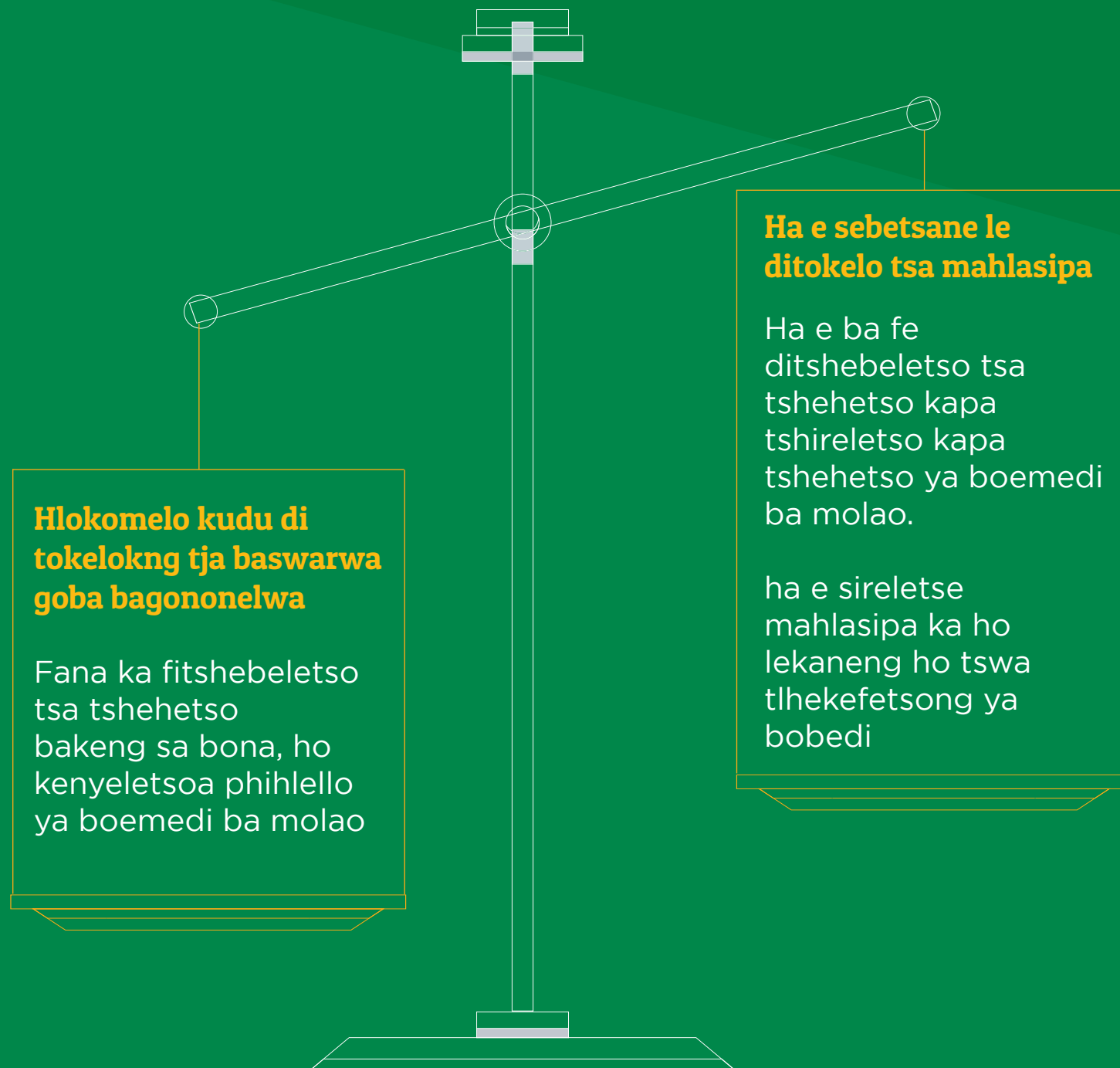
- **Go sekgolwe**
- **Ho qoswa**
- **Ho se tshware ka hlomphe**
- **Go emisa**
- **Ho tshwarwa jwalo ka ha e ka nyewe ha e bohlokwa**
- **Ho ho botswa hore o phethe se etsahetseng ka makgetlo a mmalwa**
- **Ho se fuwe tshebeletso ya tshehetso**



**Sena se bolela hore**

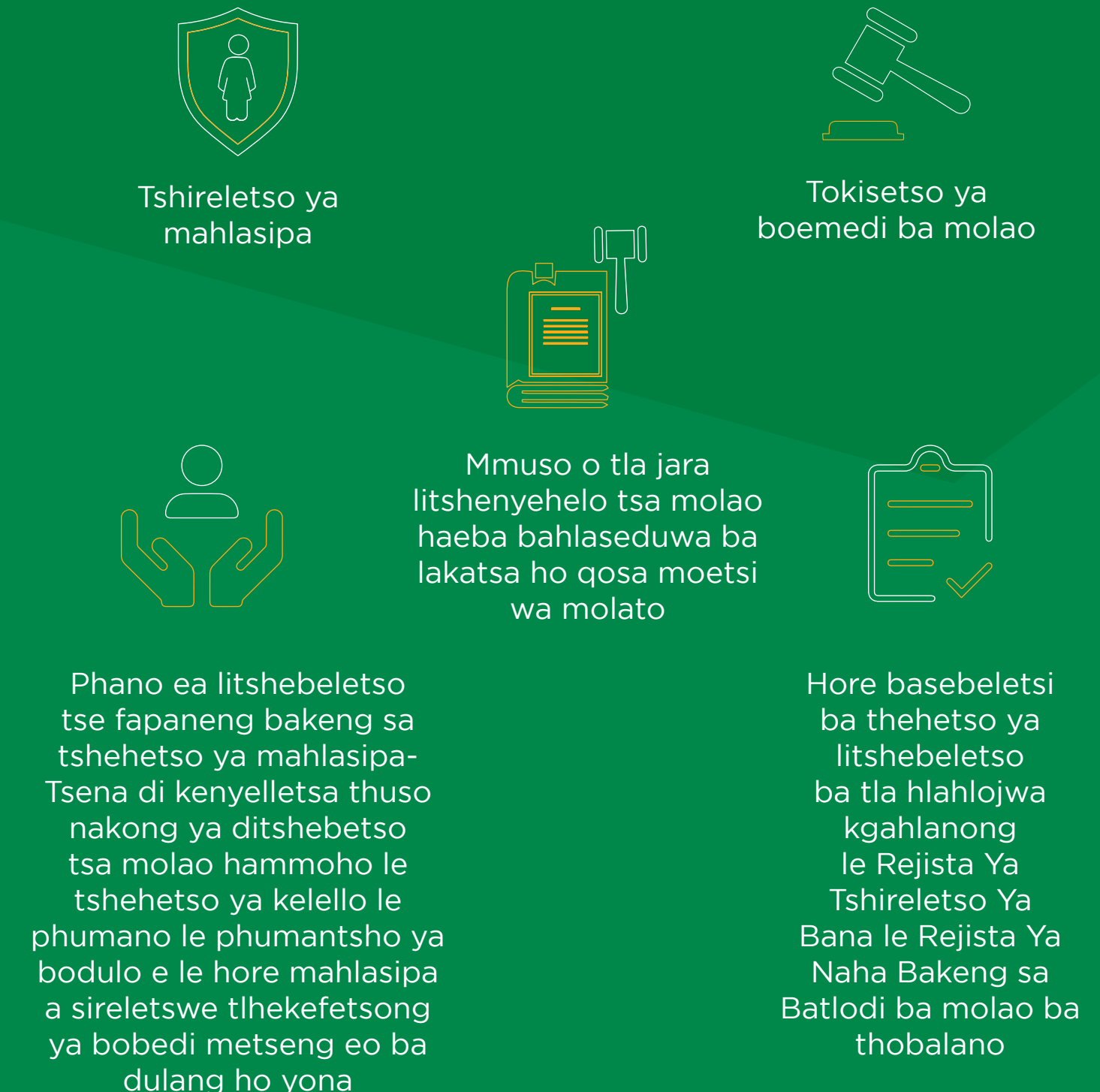
# TEKANYO E FOSAHEITSE!

Hajoale mahlasipa a mangata a tliekefetso ya bong ba fumana hore sistimi ya toka ya:



ho fumana botsitso hantle...

# VSS BILI E ETSA TLHAHISO YA NETEFATSO YA MOLAO:



leqheka le akaretsang...



# BILI ENA KE KAROLO YA LEANO LE FELLETSENG LA HO SEBETSANA LE TLHEKEFETSO YA BONG



- E tla tsamaiswa ka ditshiya tse nne (4) tsa NSP mabapi le Tlhekefetso ya Bong, Tlhekefetso ya bong le dipolao tsa basadi



- E tla tsamaiswa ka ditshiya tse nne (4) tsa NSP mabapi le Tlhekefetso ya Bong: Phetolo, Tlhokomelo, Tshehetso, Pholo



- Bili ya vss hape e hokahantswe le sepheo sa tumellano ya mahlasipa a botlokotsebe Afrika Borwa mme e tla thusa ho netefatsa phethahatso e felletseng ya tshireletso ho bohle ba hlohang tshireletso ya yona



- ke karolo ya moralo wa mmuso wa ho lwantsha botlokotsebe, haholoholo, dikgoka tse itshetlehileng hodima bong le botlokotsebe bo mabifi

**Mehatoe e latelang...**



## HO FETISA BILI KA PALAMENTENG

Bili ya vss e phatlalalitswe e le karolo ya tshebetso ya a ho e fetisa paramenteng ho e etsa e tlamang ka molao.

## HO NKA KAROLO HA HAO

### Ditlhaloso di lokela ho romellwa ka sebopeho se latelang:

- Bolela polelwana eo o buang ka yona (nomoro ya yona)
- Ngola maikutlo a hao a amanang le polelwana ena
- Khothatso: bolela hore na hobaneng o fanne ka maikutlo

**ditlhaloso tsa hao le mokhaba wa ho di romella...**



# Ho nka karolo hwa setjhaba:

Sechaba se mekgwa ho fana ka maikutlo ka bili ya vss.

O ka fihlella bili ya vss le memorandum tse phatlalalitsweng ho sepheo mona: **[www.dsd.gov.za](http://www.dsd.gov.za)** goba Government notice No.43528.Government Gazette,17 July 2020

Etsa tlhahiso ya hao

Ka poso: The Director-General: Department of Social Development,  
Private Bag X901, Pretoria, 0001

Ka imeili: Ms Siza Magangoe on **[Sizam@dsd.gov.za](mailto:Sizam@dsd.gov.za)**;

gobaLuyanda Mtshotshisa on **[LuyandaMt@socdev.gov.za](mailto:LuyandaMt@socdev.gov.za)**,

goba:Ms Anna Sithole on **[Annas@dsd.gov.za](mailto:Annas@dsd.gov.za)**

**Letsatsi la ho kwala la ditlhahiso ke la 7 Mphalane 2020.**



**social development**

Department:  
Social Development  
REPUBLIC OF SOUTH AFRICA

